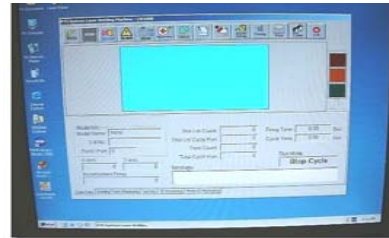




Laser Spot Welder



This machine is used in a metal stamping house to spot weld stainless steel plates up to 3mm thick. The x-y table is programmable and carries a 500mm x 500mm work table



Notice the teaching console for point to point programming

The system runs on a Pentium based microprocessor. The user friendly software, running on Windows™ provides management data like output, yields, dates, lot and operator traceability. During the welding process the monitor shows the position of the

weld on a real time basis. Programming is simple. A teach in console with a laser pointer facilitates teaching. All doors are interlocked with special viewing glass.



Laser Head delivers Laser Beam to spot weld the parts mount on the worktable



